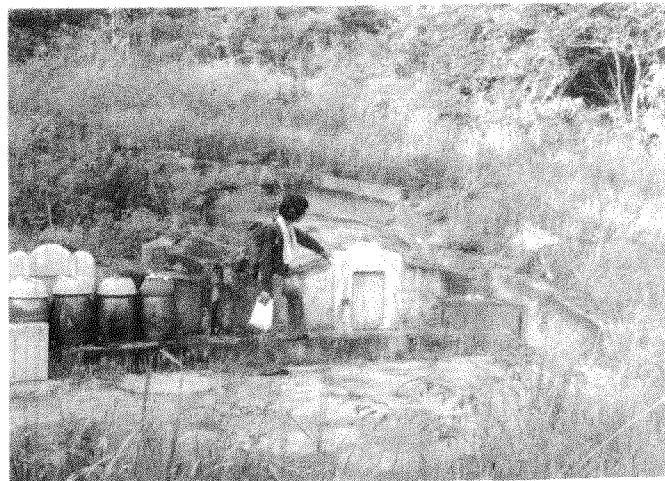




金竹排之村民遺物

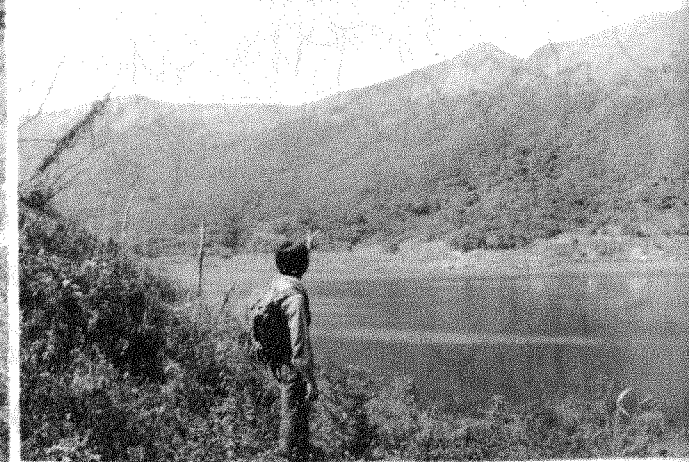


荒草孤塚，瀟灑鬼域氣氛



金竹排小憩

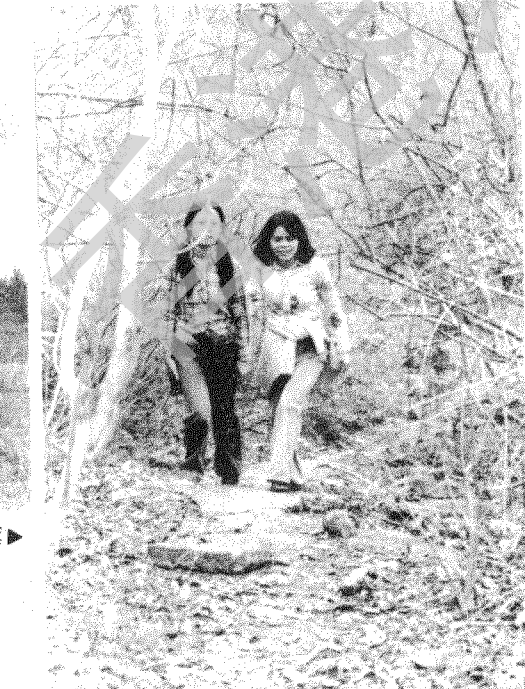
荒村殘徑懷舊▶



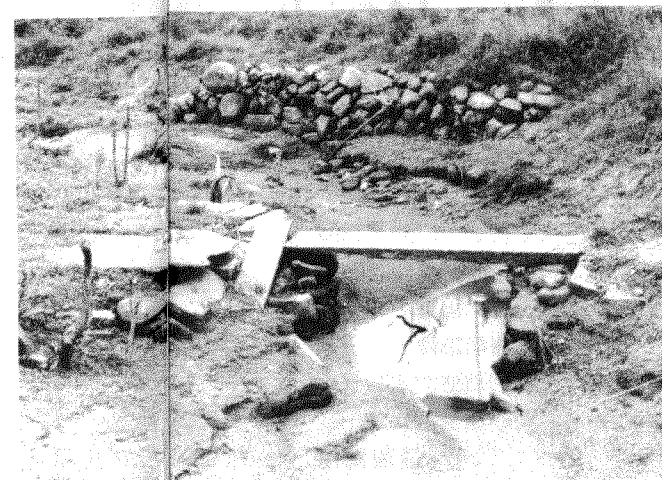
由東心其回望橫嶺及大濬



孖崗



小濬風光



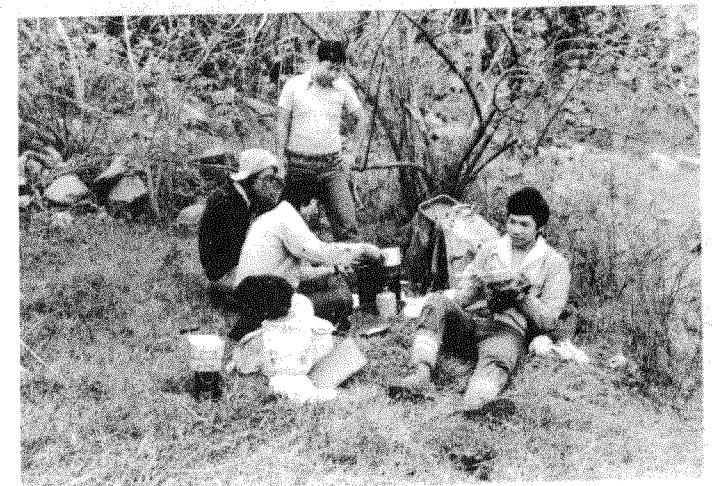
橫嶺頭之「小橋流水」



上通橫嶺下臨鬼域



殘枝處處一片荒涼



湖畔野炊

# 船灣淡水湖風光圖片特輯



